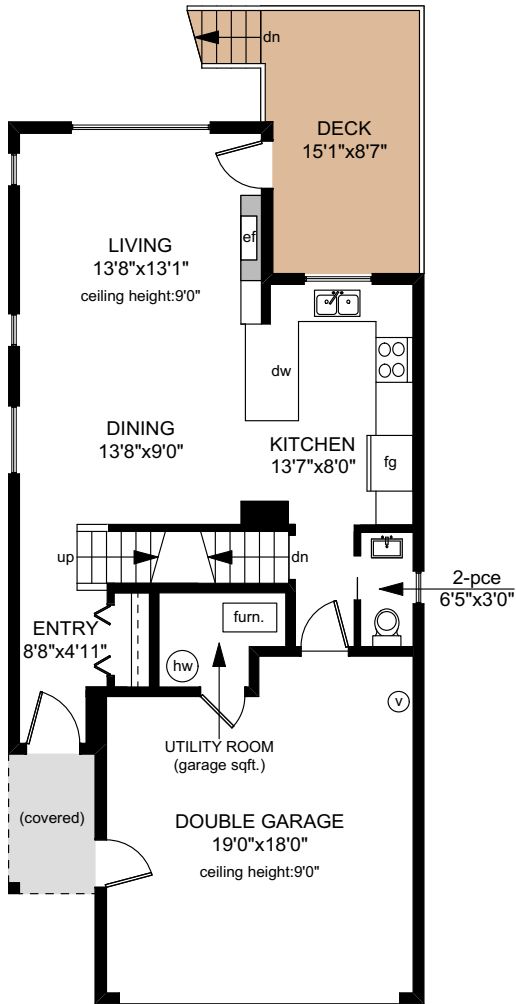
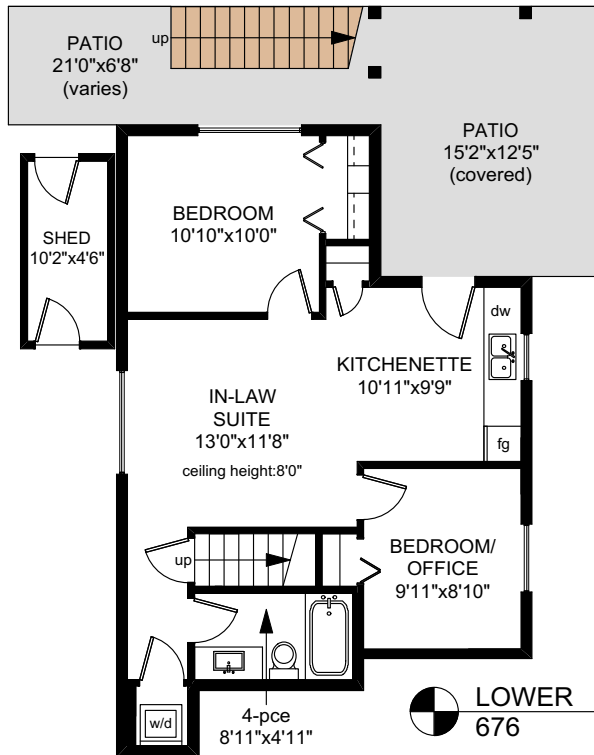
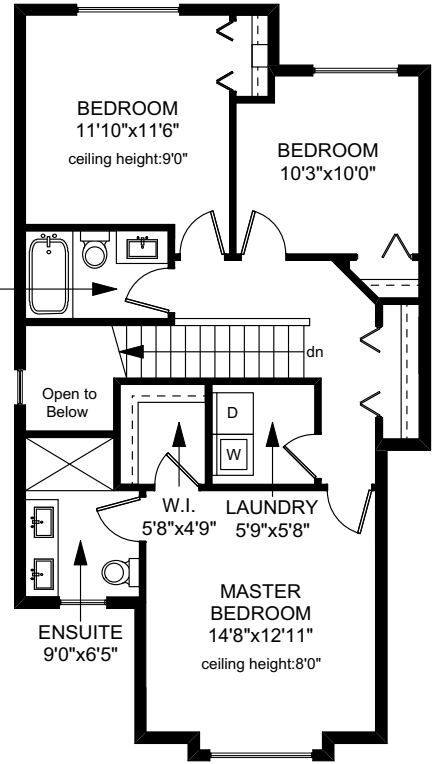


3004 DORNIER ROAD

UPPER FLOOR
849 SQ.FT

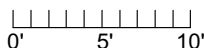


MAIN FLOOR
639 SQ.FT



LOWER FLOOR
676 SQ.FT

	FINISHED SQ. FT.	UNFINISHED SQ. FT.	TOTAL SQ. FT.
MAIN	639	0	639
UPPER	849	0	849
LOWER	676	0	676
TOTAL	2164	0	2164
GARAGE	0	386	386
SHED	0	59	59
DECK	0	133	133
PATIO	0	291	291



PREPARED FOR THE EXCLUSIVE USE OF
THE NEAL ESTATE TEAM OF RE/MAX ALLIANCE

MEASURED ON: 09/13/19
DRAWING FILE: 17529

Tafemeasure VICTORIA, B.C.
Ph. 883.8894
www.tafemeasure.com